

Optimize-Offline Guide - Windows Debloating Tool, Windows 1803, 1903, 19H2, 1909, 20H1 and LTSC 2019

Important note for anons: Optimize-Offline requires Windows 10. For Windows 7/8.1 users, you can install Windows 10 on a virtual machine using your favorite virtualization software. This guide assumes you're working from Windows 10 installation.

Important Note: To use the `"ISO": "No-Prompt"` or `"ISO": "Prompt"` switches after using W10UI updates installer, you need to right click the `W10UI.cmd`, choose Edit and search for 'prompt', then remove this line before you integrate the updates:

```
del /f /q "%target%\efi\microsoft\boot\*noprompt.*" %_Nul3%
```

Download the 'Source Code' .zip file from [Optimize-Offline's releases page](#) and extract its contents to a folder.

Integrate updates with W10UI beforehand.

You no longer need ADK Deployment Tools installed or `oscdimg.exe` to make an ISO with Optimize-Offline but you do with W10UI. Install ADK Deployment Tools only or put `oscdimg.exe` in the folder the `W10UI.cmd` is in.

Edit the `Configuration.json` file in the `\Optimize-Offline-4.0.0.17\Optimize-Offline-4.0.0.17\` folder with Notepad++ to the options you want. Mine are below. **If you edit any of the Optimize-Offline files or .ps1 files etc. for any reason use Notepad++ or Powershell ISE. Saving files with the regular Windows Notepad breaks the encoding and can cause problems.**

```
{
  "_Info": [
    "This is a JSON based Configuration file for Optimize-Offline.",
    "Ensure proper formatting is used when editing the JSON parameter values.",
    "Boolean parameter values use true and false. String parameter values must be enclosed in double-quotes."
  ],
  "SourcePath": "D:\\1\\Win10_19042.630_x64_2020-11-07.iso",
  "WindowsApps": "Select",
  "SystemApps": true,
  "Capabilities": true,
  "Packages": true,
  "Features": true,
  "DeveloperMode": true,
  "WindowsStore": false,
  "MicrosoftEdge": false,
  "Win32Calc": true,
  "Dedup": false,
  "DaRT": [
  ],
  "Registry": true,
  "Additional": {
    "Setup": true,
    "Wallpaper": false,
    "SystemLogo": false,
    "LockScreen": false,
    "RegistryTemplates": true,
    "LayoutModification": false,
    "Unattend": true,
    "Drivers": true,
    "NetFx3": true
  },
  "ISO": "No-Prompt"
}
```

In the `Optimize Offline Content/Additional/Drivers` folder there are `Boot`, `Install` and `Recovery` folders. I put my drivers, .inf files for AHCI and RAID, Network, MEI, Chipset and SerialIO and M.2 etc. You need the driver .inf files and the related files (not the .exe driver packages) to integrate drivers with this script. Most drivers can be found [here](#). I also use [Windows Answer File Generator](#) to create an `autounattend.xml` file, rename it to `unattend.xml` and put it in the `Content/Additional/Unattend` folder.

After making the `unattend.xml` file from the website I open it in ADK 'System Image Manager' with the `install.wim` I'm using it on and correct any errors it finds after I use the 'Validate Answer File' option, I then 'Save As' back to the original `unattend.xml`.

Open an Elevated Powershell console in the `D:\Optimize-Offline-4.0.0.17\Optimize-Offline-4.0.0.17\` folder and run `.\Start-Optimize.ps1` command. You may need to enable scripts on your PC by running this command in the Powershell prompt:

If you keep getting the 'Run Once' error, just right click on the *Optimize-Offline-4.0.0.17.zip* and choose 'Unblock' before unzipping it.

Screenshots below with what is totally safe to remove.

- Removing **Microsoft.MSPaint** just removes the 3DPaint, not the regular Paint app.
- With the below, the Microsoft Store **DOES** work.
- **Microsoft.Windows.FileExplorer** just removes the pretty much useless UWP File Explorer, not the normal File Explorer.
- Removing **Microsoft.Windows.SecHealthUI** removes Windows Defender. If you want to use Defender, **DON'T** remove it.

Select the Provisioned App Packages to Remove.

DisplayName	PackageName
CortanaApp.View.App	Microsoft.549981C3F5F10_1.1911.21713.0_neutral~_8wekyb3d8bbwe
Microsoft.BingWeather	Microsoft.BingWeather_4.25.20211.0_neutral~_8wekyb3d8bbwe
Microsoft.DesktopAppInstaller	Microsoft.DesktopAppInstaller_2019.125.2243.0_neutral~_8wekyb3d8bbwe
Microsoft.GetHelp	Microsoft.GetHelp_10.1706.13331.0_neutral~_8wekyb3d8bbwe
Microsoft.Getstarted	Microsoft.Getstarted_8.2.22942.0_neutral~_8wekyb3d8bbwe
Microsoft.HEIFImageExtension	Microsoft.HEIFImageExtension_1.0.22742.0_x64_8wekyb3d8bbwe
Microsoft.Microsoft3DViewer	Microsoft.Microsoft3DViewer_6.1908.2042.0_neutral~_8wekyb3d8bbwe
Microsoft.MicrosoftOfficeHub	Microsoft.MicrosoftOfficeHub_18.1903.1152.0_neutral~_8wekyb3d8bbwe
Microsoft.MicrosoftSolitaireCollection	Microsoft.MicrosoftSolitaireCollection_4.4.8204.0_neutral~_8wekyb3d8bbwe
Microsoft.MicrosoftStickyNotes	Microsoft.MicrosoftStickyNotes_3.6.73.0_neutral~_8wekyb3d8bbwe
Microsoft.MixedReality.Portal	Microsoft.MixedReality.Portal_2000.19081.1301.0_neutral~_8wekyb3d8bbwe
Microsoft.MSPaint	Microsoft.MSPaint_2019.729.2301.0_neutral~_8wekyb3d8bbwe
Microsoft.Office.OneNote	Microsoft.Office.OneNote_16001.12026.20112.0_neutral~_8wekyb3d8bbwe
Microsoft.People	Microsoft.People_2019.305.632.0_neutral~_8wekyb3d8bbwe
Microsoft.ScreenSketch	Microsoft.ScreenSketch_2019.904.1644.0_neutral~_8wekyb3d8bbwe
Microsoft.SkypeApp	Microsoft.SkypeApp_14.53.77.0_neutral~_kzf8qxf38zg5c
Microsoft.StorePurchaseApp	Microsoft.StorePurchaseApp_11811.1001.1813.0_neutral~_8wekyb3d8bbwe
Microsoft.VCLibs.140.00	Microsoft.VCLibs.140.00_14.0.27323.0_x64_8wekyb3d8bbwe
Microsoft.VP9VideoExtensions	Microsoft.VP9VideoExtensions_1.0.22681.0_x64_8wekyb3d8bbwe
Microsoft.Wallet	Microsoft.Wallet_2.4.18324.0_neutral~_8wekyb3d8bbwe
Microsoft.WebMediaExtensions	Microsoft.WebMediaExtensions_1.0.20875.0_neutral~_8wekyb3d8bbwe
Microsoft.WebpImageExtension	Microsoft.WebpImageExtension_1.0.22753.0_x64_8wekyb3d8bbwe
Microsoft.Windows.Photos	Microsoft.Windows.Photos_2019.19071.12548.0_neutral~_8wekyb3d8bbwe
Microsoft.WindowsAlarms	Microsoft.WindowsAlarms_2019.807.41.0_neutral~_8wekyb3d8bbwe
Microsoft.WindowsCalculator	Microsoft.WindowsCalculator_2020.1906.55.0_neutral~_8wekyb3d8bbwe
Microsoft.WindowsCamera	Microsoft.WindowsCamera_2018.826.98.0_neutral~_8wekyb3d8bbwe
microsoft.windowscommunicationsapps	microsoft.windowscommunicationsapps_16005.11629.20316.0_neutral~_8wekyb3d8bbwe
Microsoft.WindowsFeedbackHub	Microsoft.WindowsFeedbackHub_2019.1111.2029.0_neutral~_8wekyb3d8bbwe
Microsoft.WindowsMaps	Microsoft.WindowsMaps_2019.716.2316.0_neutral~_8wekyb3d8bbwe
Microsoft.WindowsSoundRecorder	Microsoft.WindowsSoundRecorder_2019.716.2313.0_neutral~_8wekyb3d8bbwe
Microsoft.WindowsStore	Microsoft.WindowsStore_11910.1002.513.0_neutral~_8wekyb3d8bbwe
Microsoft.Xbox.TCUI	Microsoft.Xbox.TCUI_1.23.28002.0_neutral~_8wekyb3d8bbwe
Microsoft.XboxApp	Microsoft.XboxApp_48.49.31001.0_neutral~_8wekyb3d8bbwe
Microsoft.XboxGameOverlay	Microsoft.XboxGameOverlay_1.46.11001.0_neutral~_8wekyb3d8bbwe
Microsoft.XboxGamingOverlay	Microsoft.XboxGamingOverlay_2.34.28001.0_neutral~_8wekyb3d8bbwe
Microsoft.XboxIdentityProvider	Microsoft.XboxIdentityProvider_12.50.6001.0_neutral~_8wekyb3d8bbwe
Microsoft.XboxSpeechToTextOverlay	Microsoft.XboxSpeechToTextOverlay_1.17.29001.0_neutral~_8wekyb3d8bbwe
Microsoft.YourPhone	Microsoft.YourPhone_2019.430.2026.0_neutral~_8wekyb3d8bbwe
Microsoft.ZuneMusic	Microsoft.ZuneMusic_2019.19071.19011.0_neutral~_8wekyb3d8bbwe
Microsoft.ZuneVideo	Microsoft.ZuneVideo_2019.19071.19011.0_neutral~_8wekyb3d8bbwe

Remove System Apps.

Filter	
+ Add criteria ▼	
DisplayName	PackageName
Microsoft.AAD.BrokerPlugin	Microsoft.AAD.BrokerPlugin_10.0.19041.423_neutral_neutral_cw5n1h2txyewy
Microsoft.AccountsControl	Microsoft.AccountsControl_10.0.19041.423_neutral_neutral_cw5n1h2txyewy
Microsoft.AsyncTextService	Microsoft.AsyncTextService_10.0.19041.423_neutral_neutral_8wekyb3d8bbwe
Microsoft.BioEnrollment	Microsoft.BioEnrollment_10.0.19041.423_neutral_neutral_cw5n1h2txyewy
Microsoft.CredDialogHost	Microsoft.CredDialogHost_10.0.19041.423_neutral_neutral_cw5n1h2txyewy
Microsoft.ECApp	Microsoft.ECApp_10.0.19041.423_neutral_neutral_8wekyb3d8bbwe
Microsoft.LockApp	Microsoft.LockApp_10.0.19041.423_neutral_neutral_cw5n1h2txyewy
Microsoft.MicrosoftEdge	Microsoft.MicrosoftEdge_44.19041.423.0_neutral_8wekyb3d8bbwe
Microsoft.MicrosoftEdgeDevToolsClient	Microsoft.MicrosoftEdgeDevToolsClient_10.0.19041.423_neutral_8wekyb3d8bbwe
Microsoft.Win32WebViewHost	Microsoft.Win32WebViewHost_10.0.19041.423_neutral_neutral_cw5n1h2txyewy
Microsoft.Windows.AddSuggestedFoldersToLibarayDialog	F46D4000-FD22-4DB4-AC8E-4E1DDDE828FE_10.0.19041.423_neutral_neutral_cw5n1h2txyewy
Microsoft.Windows.AppRep.ChxApp	Microsoft.Windows.AppRep.ChxApp_10.0.19041.423_neutral_neutral_cw5n1h2txyewy
Microsoft.Windows.AppResolverUX	E2A4F912-2574-4A75-9BB0-0D023378592B_10.0.19041.423_neutral_neutral_cw5n1h2txyewy
Microsoft.Windows.AssignedAccessLockApp	Microsoft.Windows.AssignedAccessLockApp_10.0.19041.423_neutral_neutral_cw5n1h2txyewy
Microsoft.Windows.CallingShellApp	Microsoft.Windows.CallingShellApp_10.0.19041.423_neutral_neutral_cw5n1h2txyewy
Microsoft.Windows.CapturePicker	Microsoft.Windows.CapturePicker_10.0.19041.423_neutral_neutral_cw5n1h2txyewy
Microsoft.Windows.CloudExperienceHost	Microsoft.Windows.CloudExperienceHost_10.0.19041.423_neutral_neutral_cw5n1h2txyewy
Microsoft.Windows.ContentDeliveryManager	Microsoft.Windows.ContentDeliveryManager_10.0.19041.423_neutral_neutral_cw5n1h2txyewy
Microsoft.Windows.FileExplorer	c5e2524a-ea46-4f67-841f-6a9465d9d515_10.0.19041.423_neutral_neutral_cw5n1h2txyewy
Microsoft.Windows.FilePicker	1527c705-839a-4832-9118-54d48d6a0c89_10.0.19041.423_neutral_neutral_cw5n1h2txyewy
Microsoft.Windows.NarratorQuickStart	Microsoft.Windows.NarratorQuickStart_10.0.19041.423_neutral_neutral_8wekyb3d8bbwe
Microsoft.Windows.OOBENetworkCaptivePortal	Microsoft.Windows.OOBENetworkCaptivePortal_10.0.19041.423_neutral_neutral_cw5n1h2txyewy
Microsoft.Windows.OOBENetworkConnectionFlow	Microsoft.Windows.OOBENetworkConnectionFlow_10.0.19041.423_neutral_neutral_cw5n1h2txyewy
Microsoft.Windows.ParentalControls	Microsoft.Windows.ParentalControls_10.0.19041.423_neutral_neutral_cw5n1h2txyewy
Microsoft.Windows.PeopleExperienceHost	Microsoft.Windows.PeopleExperienceHost_10.0.19041.423_neutral_neutral_cw5n1h2txyewy
Microsoft.Windows.PinningConfirmationDialog	Microsoft.Windows.PinningConfirmationDialog_10.0.19041.423_neutral_neutral_cw5n1h2txyewy
Microsoft.Windows.Search	Microsoft.Windows.Search_10.0.19041.423_neutral_neutral_cw5n1h2txyewy
Microsoft.Windows.SecHealthUI	Microsoft.Windows.SecHealthUI_10.0.19041.423_neutral_neutral_cw5n1h2txyewy
Microsoft.Windows.SecureAssessmentBrowser	Microsoft.Windows.SecureAssessmentBrowser_10.0.19041.423_neutral_neutral_cw5n1h2txyewy
Microsoft.Windows.ShellExperienceHost	Microsoft.Windows.ShellExperienceHost_10.0.19041.610_neutral_neutral_cw5n1h2txyewy
Microsoft.Windows.StartMenuExperienceHost	Microsoft.Windows.StartMenuExperienceHost_10.0.19041.610_neutral_neutral_cw5n1h2txyewy
Microsoft.Windows.XGpuEjectDialog	Microsoft.Windows.XGpuEjectDialog_10.0.19041.423_neutral_neutral_cw5n1h2txyewy
Microsoft.XboxGameCallableUI	Microsoft.XboxGameCallableUI_10.0.19041.423_neutral_neutral_cw5n1h2txyewy
MicrosoftWindows.Client.CBS	MicrosoftWindows.Client.CBS_120.2212.31.0_neutral_neutral_cw5n1h2txyewy
MicrosoftWindows.UndockedDevKit	MicrosoftWindows.UndockedDevKit_10.0.19041.423_neutral_neutral_cw5n1h2txyewy
NcsiUwpApp	NcsiUwpApp_10.0.19041.423_neutral_neutral_8wekyb3d8bbwe
Windows.CBSPreview	Windows.CBSPreview_10.0.19041.423_neutral_neutral_cw5n1h2txyewy
windows.immersivecontrolpanel	windows.immersivecontrolpanel_10.0.2.1000_neutral_neutral_cw5n1h2txyewy
Windows.PrintDialog	Windows.PrintDialog_6.2.1.0_neutral_neutral_cw5n1h2txyewy

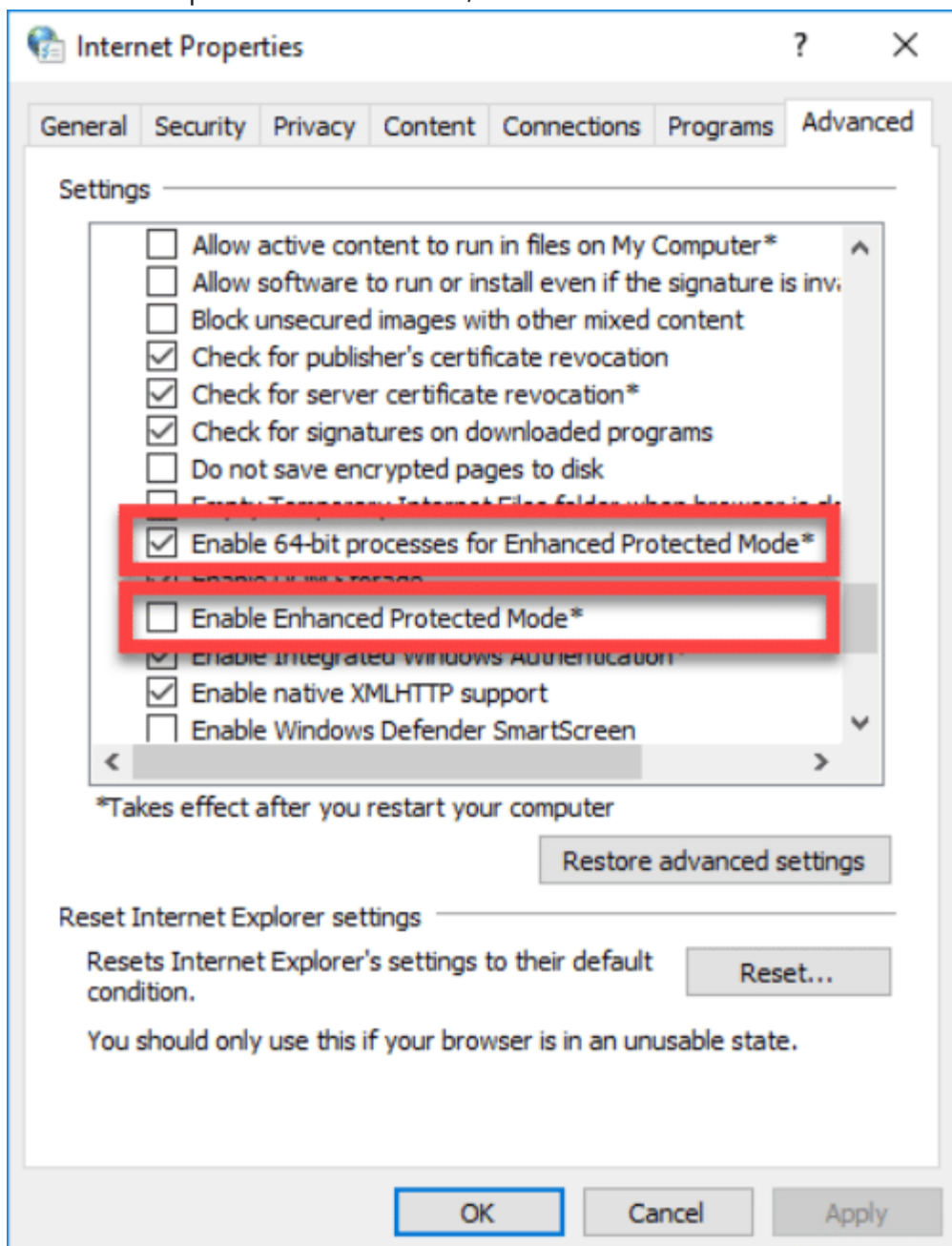
If you remove Internet Explorer and Media Player it may cause some games that rely on the libraries from them to not work. I've never had that problem, but alternatively, you can leave them enabled in the script, and just disable them in Control Panel, Programs And Features, 'Turn Windows features on or off', then the libraries will still be installed.

I remove Notepad and Wordpad because I prefer using Notepad++. You can set in Preferences in Notepad++ for it to open .txt and .inf files etc. by default.

Remove Windows Capabilities.

Name	State
App.StepsRecorder~~~~0.0.1.0	Installed
App.Support.QuickAssist~~~~0.0.1.0	Installed
Browser.InternetExplorer~~~~0.0.11.0	Installed
DirectX.Configuration.Database~~~~0.0.1.0	Installed
Hello.Face.18967~~~~0.0.1.0	Installed
Hello.Face.Migration.18967~~~~0.0.1.0	Installed
Language.Handwriting~~~en-GB~0.0.1.0	Installed
Language.OCR~~~en-GB~0.0.1.0	Installed
Language.Speech~~~en-GB~0.0.1.0	Installed
MathRecognizer~~~~0.0.1.0	Installed
Media.WindowsMediaPlayer~~~~0.0.12.0	Installed
Microsoft.Windows.MSPaint~~~~0.0.1.0	Installed
Microsoft.Windows.Notepad~~~~0.0.1.0	Installed
Microsoft.Windows.PowerShell.ISE~~~~0.0.1.0	Installed
Microsoft.Windows.WordPad~~~~0.0.1.0	Installed
NetFX3~~~~	Installed
OneCoreUAP.OneSync~~~~0.0.1.0	Installed
OpenSSH.Client~~~~0.0.1.0	Installed
Print.Fax.Scan~~~~0.0.1.0	Installed
Print.Management.Console~~~~0.0.1.0	Installed
Windows.Client.ShellComponents~~~~0.0.1.0	Installed

If Internet Explorer doesn't work, Enable 64 Bit Processes in Advanced Properties like below.



Internet Explorer x64

I remove these as I don't use those Windows Features.

Remove Windows Packages.

PackageName	ReleaseType
Microsoft-Windows-Printing-WFS-FoD-Package~31bf3856ad364e35~amd64~en-GB~10.0.19041.117	OnDemandPack
Microsoft-Windows-Printing-PMCPPC-FoD-Package~31bf3856ad364e35~amd64~~10.0.19041.1	OnDemandPack
Microsoft-Windows-StepsRecorder-Package~31bf3856ad364e35~amd64~en-GB~10.0.19041.1	OnDemandPack
Microsoft-Windows-Printing-WFS-FoD-Package~31bf3856ad364e35~amd64~~10.0.19041.1	OnDemandPack
Microsoft-Windows-PowerShell-ISE-FOD-Package~31bf3856ad364e35~wow64~en-GB~10.0.19041.1	OnDemandPack
Microsoft-Windows-PowerShell-ISE-FOD-Package~31bf3856ad364e35~amd64~~10.0.19041.1	OnDemandPack
Microsoft-Windows-Printing-PMCPPC-FoD-Package~31bf3856ad364e35~amd64~en-GB~10.0.19041.1	OnDemandPack
Microsoft-Windows-PowerShell-ISE-FOD-Package~31bf3856ad364e35~wow64~~10.0.19041.1	OnDemandPack
Microsoft-Windows-WordPad-FoD-Package~31bf3856ad364e35~amd64~~10.0.19041.1	OnDemandPack
Microsoft-Windows-WordPad-FoD-Package~31bf3856ad364e35~amd64~en-GB~10.0.19041.1	OnDemandPack
Microsoft-Windows-WordPad-FoD-Package~31bf3856ad364e35~wow64~~10.0.19041.1	OnDemandPack
Microsoft-Windows-WordPad-FoD-Package~31bf3856ad364e35~wow64~en-GB~10.0.19041.1	OnDemandPack
Microsoft-Windows-StepsRecorder-Package~31bf3856ad364e35~wow64~en-GB~10.0.19041.1	OnDemandPack
Microsoft-Windows-StepsRecorder-Package~31bf3856ad364e35~amd64~~10.0.19041.1	OnDemandPack
Microsoft-Windows-UserExperience-Desktop-Package~31bf3856ad364e35~amd64~~10.0.19041.173	OnDemandPack
Microsoft-Windows-StepsRecorder-Package~31bf3856ad364e35~wow64~~10.0.19041.1	OnDemandPack
Microsoft-Windows-PowerShell-ISE-FOD-Package~31bf3856ad364e35~amd64~en-GB~10.0.19041.1	OnDemandPack
Microsoft-Windows-LanguageFeatures-Speech-en-gb-Package~31bf3856ad364e35~amd64~~10.0.19041.1	OnDemandPack
Microsoft-Windows-MediaPlayer-Package~31bf3856ad364e35~amd64~~10.0.19041.153	OnDemandPack
Microsoft-Windows-MSPaint-FoD-Package~31bf3856ad364e35~amd64~en-GB~10.0.19041.1	OnDemandPack
Microsoft-Windows-LanguageFeatures-OCR-en-gb-Package~31bf3856ad364e35~amd64~~10.0.19041.1	OnDemandPack
Microsoft-OneCore-DirectX-Database-FOD-Package~31bf3856ad364e35~amd64~~10.0.19041.1	OnDemandPack
Microsoft-Windows-InternetExplorer-Optional-Package~31bf3856ad364e35~amd64~~11.0.19041.1	OnDemandPack
Microsoft-Windows-LanguageFeatures-Handwriting-en-gb-Package~31bf3856ad364e35~amd64~~10.0.19041.1	OnDemandPack
Microsoft-Windows-Notepad-FoD-Package~31bf3856ad364e35~amd64~~10.0.19041.117	OnDemandPack
Microsoft-Windows-Notepad-FoD-Package~31bf3856ad364e35~wow64~en-GB~10.0.19041.1	OnDemandPack
Microsoft-Windows-Notepad-FoD-Package~31bf3856ad364e35~wow64~~10.0.19041.1	OnDemandPack
Microsoft-Windows-Notepad-FoD-Package~31bf3856ad364e35~amd64~en-GB~10.0.19041.1	OnDemandPack
Microsoft-Windows-MSPaint-FoD-Package~31bf3856ad364e35~amd64~~10.0.19041.1	OnDemandPack
Microsoft-Windows-MSPaint-FoD-Package~31bf3856ad364e35~wow64~en-GB~10.0.19041.1	OnDemandPack
Microsoft-Windows-MSPaint-FoD-Package~31bf3856ad364e35~wow64~~10.0.19041.1	OnDemandPack
Microsoft-Windows-Client-LanguagePack-Package~31bf3856ad364e35~amd64~en-GB~10.0.19041.207	LanguagePack
Microsoft-Windows-FodMetadata-Package~31bf3856ad364e35~amd64~~10.0.19041.1	FeaturePack

Disable Optional Features.

FeatureName	State
Internet-Explorer-Optional-amd64	Enabled
MediaPlayback	Enabled
MSRDC-Infrastructure	Enabled
NetFx3	Enabled
NetFx4-AdvSrvs	Enabled
Printing-Foundation-Features	Enabled
Printing-Foundation-InternetPrinting-Client	Enabled
Printing-PrintToPDFServices-Features	Enabled
Printing-XPSServices-Features	Enabled
SearchEngine-Client-Package	Enabled
SmbDirect	Enabled
WCF-Services45	Enabled
WCF-TCP-PortSharing45	Enabled
WindowsMediaPlayer	Enabled

I enable **DirectPlay** and **LegacyComponents** for older Windows games. I enable **Microsoft-Windows-Subsystem-Linux** as I use GSAT to stress test my RAM overclock.

Enable Optional Features.

Filter	
+ Add criteria	
FeatureName	State
AppServerClient	Disabled
Client-DeviceLockdown	Disabled
Client-EmbeddedBoo...	Disabled
Client-EmbeddedLog...	Disabled
Client-EmbeddedShel...	Disabled
ClientForNFS-Infrastr...	Disabled
Client-KeyBoardFilter	Disabled
Client-ProjFS	Disabled
Client-UnifiedWriteFil...	Disabled
Containers	Disabled
Containers-Disposabl...	Disabled
DataCenterBridging	Disabled
DirectoryServices-AD...	Disabled
DirectPlay	Disabled
FaxServicesClientPackage	Disabled
HostGuardian	Disabled
HypervisorPlatform	Disabled
IIS-ApplicationDevelo...	Disabled
IIS-ServerSideIncludes	Disabled
IIS-StaticContent	Disabled
IIS-URLAuthorization	Disabled
IIS-WebDAV	Disabled
IIS-WebServer	Disabled
IIS-WebServerManagementTools	Disabled
IIS-WebServerRole	Disabled
IIS-WebSockets	Disabled
IIS-WindowsAuthentication	Disabled
IIS-WMICompatibility	Disabled
LegacyComponents	Disabled
Microsoft-Hyper-V	Disabled
Microsoft-Hyper-V-All	Disabled
Microsoft-Hyper-V-Hypervisor	Disabled
Microsoft-Hyper-V-Management-Clients	Disabled
Microsoft-Hyper-V-Management-PowerShell	Disabled
Microsoft-Hyper-V-Services	Disabled
Microsoft-Hyper-V-Tools-All	Disabled
Microsoft-Windows-Subsystem-Linux	Disabled
MSMQ-ADIntegration	Disabled
MSMQ-Container	Disabled
MSMQ-DCOM	Disabled

Choose Solid compression and it'll fit on a 4GB USB, but it can take a very long time to make the ISO. If you use an 8GB USB or bigger just choose Maximum compression, it'll save a ton of time.

Select Final Image Compression.

Filter	
+ Add criteria	
Compression	
Solid	
Maximum	
Fast	
None	